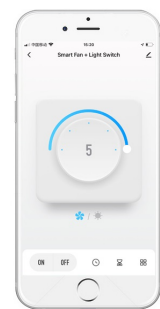


## Smart Fan/Light Switch User Manual



WiFi & Zigbee version for Smart Life or Tuya Smart

### 1.Download "Smart Life" App

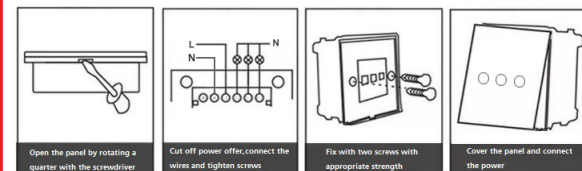
1.1 Please scan the QR code or search "Smart life" in App Store or Google Play to download App.



1.2 Open the "Smart Life" App,you need register an account with your phone number or E-mail at the first time.

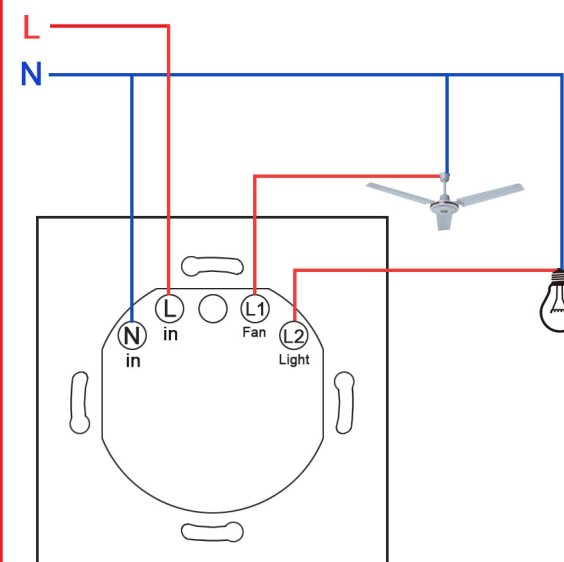
### 2.Installation Steps

**CAUTION:** Before installing the switch, make sure you have totally 100% cut off the power supply.

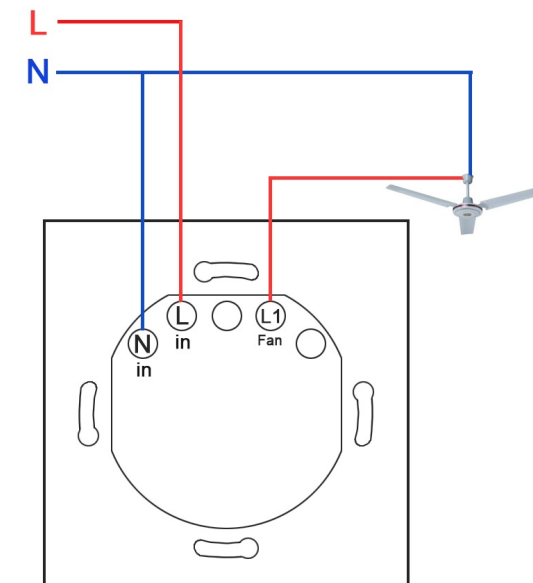


### 3.Wiring diagram

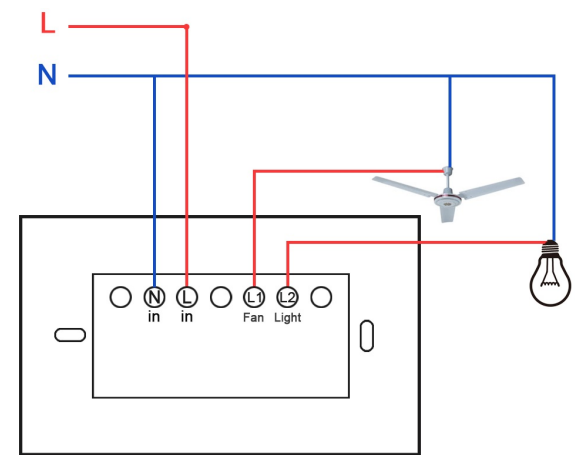
#### 3.1 Wiring for EU Fan + Light Switch



#### 3.2 Wiring for EU single Fan Switch



#### 3.3 Wiring for US Fan + Light Switch

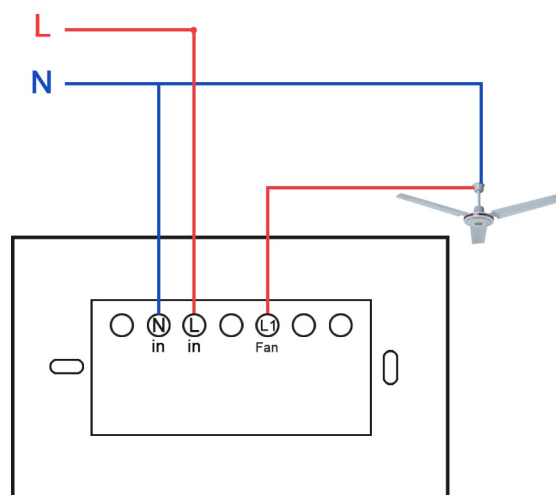


1 2

3 4

5

#### 3.4 Wiring for US single Fan Switch

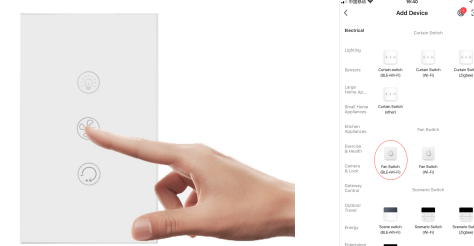


### 4.Add WiFi Switch on App

There are two ways to add the switch on App:Easy Mode (Recommend) and AP Mode.Please connect your phone to the router wifi and power up your switch.

#### 4.1 Add by Easy Mode

4.1.1 Please long press fan button for 5 seconds until the green indicator rapidly blinks.



4.1.2 Open the App "Smart Life",on the home page,tap the icon "+" on the top right into add manually.

4.1.3Then tap Electrical and select Fan Switch(BLE+Wi-Fi).

4.1.4 Confirm indicator rapidly blink,choose the local WiFi and input SSID password and then tap Confirm.

4.1.5 Wait for configuring successfully,then tap "complete".

#### 4.2 Add by AP mode

4.2.1 If you failed in configuring,please try AP Mode

4.2.2 Please long press fan button for 5 seconds until the green indicator slowly blinks.

4.2.3 Open the App "Smart Life",on the home page,tap the icon "+" on the top right into add manually.

4.2.4 Then tap Electrical and select Fan Switch(BLE+Wi-Fi)

4.2.5 Confirm indicator slowly blink,choose the local WiFi and input SSID password and then tap confirm.

4.2.6 Tap Go to Connect and select the hotspot named "SmartLife-xxxx".Once your phone connected to the hotspot,then back to the Add page.

4.2.7 Wait for configuring successfully,then tap "complete".

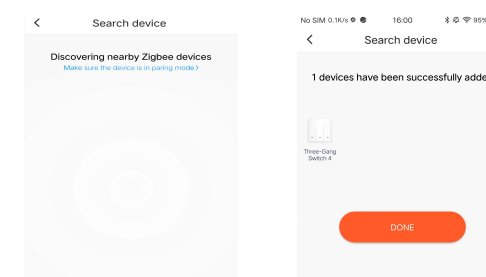
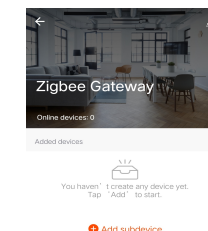
### 5.Add Zigbee Switch on App

For Zigbee Switch,a zigbee gateway is required.The zigbee gateway should be successfully configured before pairing zigbee switches.

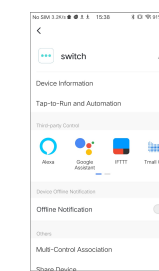
5.1 Make sure the green LED backlight is blinking fast.If not, please long press fan button for 5 seconds until the green indicator rapidly blinks.

5.2 Please enter the zigbee gateway,and then tap " Add subdevice".

5.3 The Zigbee gateway will automatically search the nearby zigbee switch.



### 6.Works with Amazon Alexa and Google Home



Tap the icon of "edit" on the upper right of switch page, then select "Alexa" or "Google Assistant",then you can see all the connection details.

#### Control wall switch through Google Home/Alexa

\* Voice control through Alexa

alexa,turn on DEVICENAME

alexa,turn off DEVICENAME

\* Voice control through Google Home

Ok Google,Turn on <device name>

Ok Google,Turn off <device name>

OK Google,is <device name> on?

6

7 8

9 10